

LOGISTICS AND MARITIME STUDIES ON “BELT AND ROAD” CONFERENCE

Kelvin Leung, CEO Asia Pacific

Hong Kong, 10 May, 2016

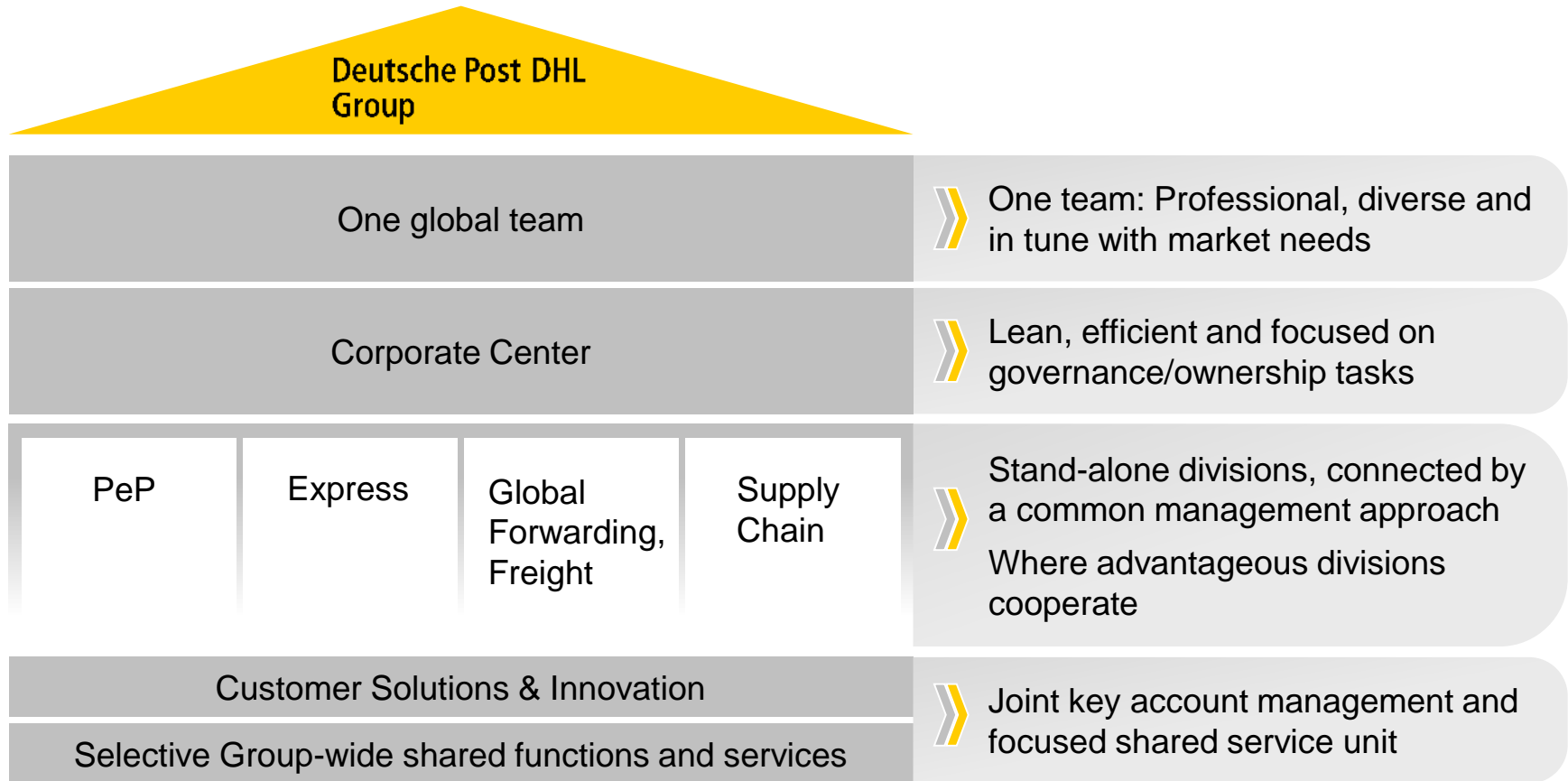


Agenda

Section

- I Introduction to DPDHL Group
- II Rail and Cross Border Trucking Service
- III Asia Pacific Airfreight Network
- IV Multi Model Service
- V Sea Air Service

DP DHL GROUP INTRODUCTION



Agenda

Section

- I Introduction to DPDHL Group
- II Rail and Cross Border Trucking Service
- III Asia Pacific Airfreight Network
- IV Multi Model Service
- V Sea Air Service

Rail and Cross Border Trucking Service



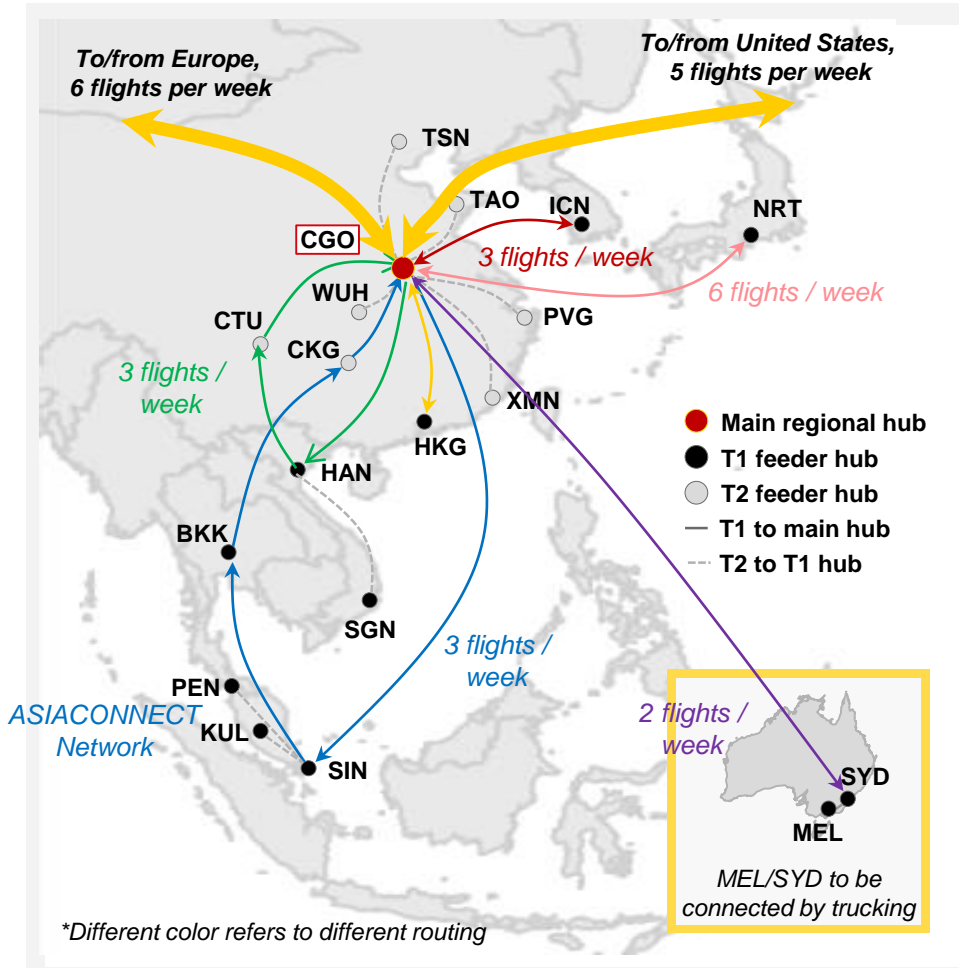
Agenda

Section

- I Introduction to DPDHL Group
- II Rail and Cross Border Trucking Service
- III Asia Pacific Airfreight Network
- IV Multi Model Service
- V Sea Air Service

AP Network Program Set up (CGO Hub)

Work in Progress



AP Network in Asia

Regional Hub: CGO

- Considering the **geographical location**, **available capacity** and **support from local authority as well as airlines**, makes CGO an ideal location in Asia
- CGO to **consolidate volumes from/to ASPA to maximize saving potential** and enhance DGF market power in the region

Tier 1 Feeder Hubs¹⁾:

- Hubs would **feed their volume into CGO** to increase regional consolidation and boost volume

Tier 2 Feeder Stations:

- Smaller or more distant stations **will feed their outbound volume to T1 hub**

Collaboration with carrier network

- Network could be further expanded by leveraging carrier network, e.g. SQ from SIN to MEL, MNL, CGK etc.

Source: DPDHL Inhouse Consulting, DGF AFR team; 1) For certain station, exact routing to be confirmed, e.g. SGN cargo can go via SGN-HAN-CGO, BKK cargo can go via BKK-CKG-CGO or BKK-CGO(direct); SYD and MEL cargo could be consolidated before shipping to CGO

Agenda

Section

- I Introduction to DPDHL Group

- II Rail and Cross Border Trucking Service

- III Asia Pacific Airfreight Network

- IV Multi Model Service

- V Sea Air Service

Flexi gateway concept

Idea

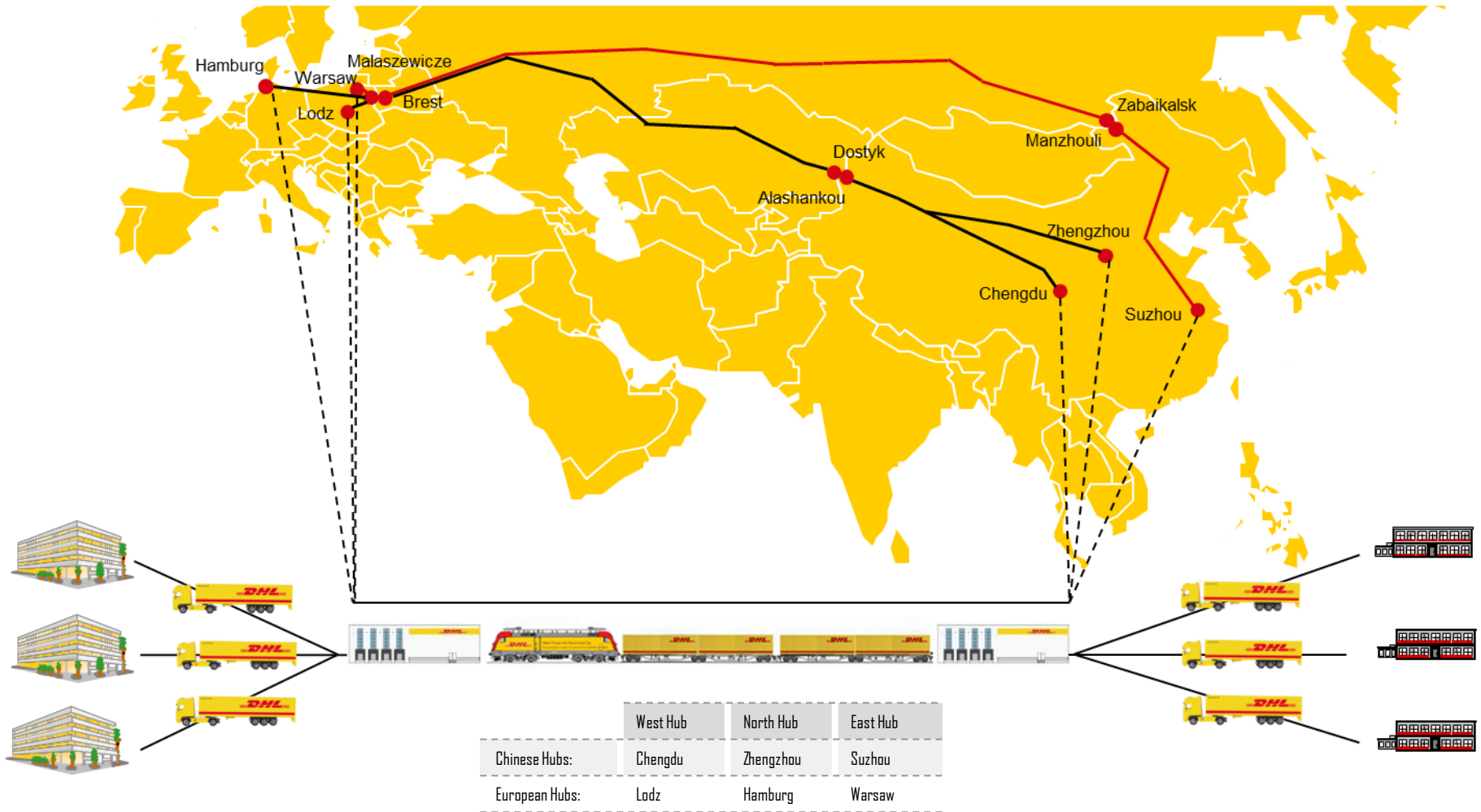
Flexible multi-terminal service utilizing all available routings to deliver shipment within specific time from China to Europe and vice versa

Benefits for customers

- One universal rate for all trains
- No risk of congestions or lack of space
- Most suitable routing advised by DHL experts
- Cost-effective and time saving service



DHL RAIL CONNECT China - Europe



Agenda

Section

- I Introduction to DPDHL Group

- II Rail and Cross Border Trucking Service

- III Asia Pacific Airfreight Network

- IV Multi Model Service

- V Sea Air Service

DHL SeAir

DHL SeAir is an innovative multi-modal solution for customers looking into better managing their supply chain.

With the combination of Ocean and Air, SeAir achieves on average 30 – 50% faster than ocean and 30 – 50% cheaper than air.

Example:

Shipment from Penang to Bristol

- 1st leg ocean freight from Penang to Dubai
- 2nd leg air freight from Dubai to London, onward trucking from London to Bristol

Transit time comparison:

- Air: < 5 days
- **SeAir: ~ 15 days**
- Ocean: ~ 35 days

ILLUSTRATIVE



Q & A



THANK YOU

*Thank
you*

